

## FIRE-RATED ROLLING SHUTTER AUTOMATIC

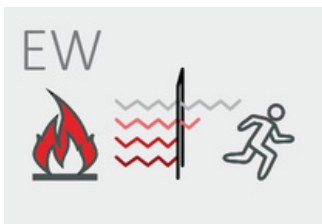
### GSF KPR E120/EW60

GSF KPR E120/EW60 Fire-Rated Roller Shutter is intended for closing off opening in vertical partitions, both internal and external. The main purpose of the shutter is to **limit flame spread for 120 minutes and to limit the spread of gases and heat flux for 60 minutes**. Shutters separate fire zones in buildings. They can be applied in public facilities and in other types of buildings. GSF KPR E120/EW60 shutter is equipped with an electric drive - a tubular motor, usually located on the right side.



#### ► CONSTRUCTION OF ROLLER SHUTTER

The curtain gate consists of: curtain coat, shaft casing, guides, ballast strip, tubular drive, control panel.



- Limits the flow of flames, gases and heat within a certain time ✓
- Separation of fire zones ✓
- Compact and light construction ✓
- Easy assembly ✓

#### ► ADDITIONAL INFORMATION

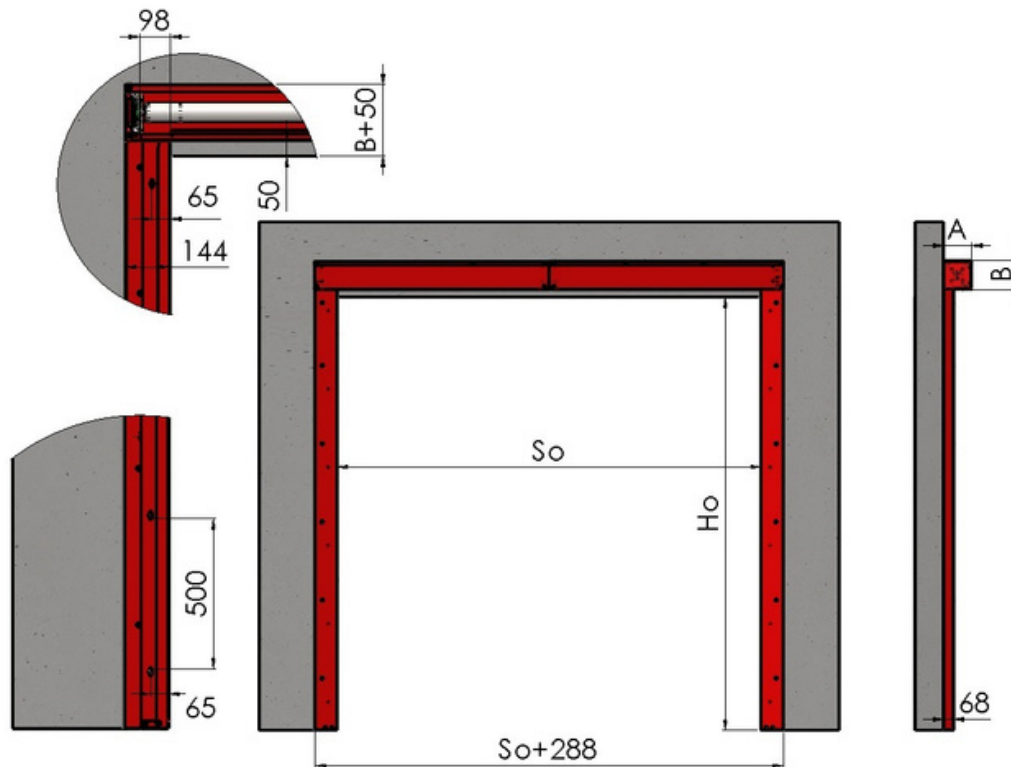
The **curtain gate coat** is made of fire-fighting fabric of glass fibre, which is wound on a shaft and fixed between the guides. The gate is controlled by the **control panel** which starts the motor and lowers the curtain when it receives a signal from a smoke detector or from a fire smoke alarm. In case of power failure, the control panel is supplied by built-in batteries. The emergency power supply time is up to 24 hours. **Shaft casing and guides** of the curtain gate are made of galvanized steel sheet as a standard. All elements made of galvanized sheet can be painted in any colour from the RAL palette. **Fasteners (screws)** are made of galvanized steel, which are not painted as standard.

GSF KPR E/EW rolling fire gates are made in accordance with the harmonized standard:  
EN 16034:2014, EN 13241:2003+A2:2016

## CONSTRUCTION CONDITIONS

### GSF KPR E120/EW60 AUTOMATIC

The installation conditions specify the space required for the gate installation. All dimensions not shown in the terms and conditions are to be agreed individually.



Main Dimensions				
So	Ho	B+50	A	B
Opening Width [mm]	Opening Height [mm]	Minimum Lintel Height [mm]	Box width [mm]	Box height [mm]
min. = 500 max. = 12000	min. = 500 max. = 6000			
≤ 2710	≤ 2820	230	180	180
≤ 4000	≤ 3400	300	250	250
≤ 3500	≤ 4500	300	250	250
≤ 4500	≤ 5000	300	250	250
≤ 5000	≤ 4000	350	300	300
≤ 6200	≤ 5000	400	350	350
≤ 7500	≤ 6000	450	400	400
≤ 12000	≤ 6000	750	700	700
Additional informations				
Guide Rail Width [mm]		144		
Guide Rail Depth [mm]		68		
Coat Weight (per 1 m <sup>2</sup> ) [kg]		1,8		

#### Warning:

The surface for mounting the gate, head box and the side guides must be even (smooth), tolerance 1mm/m. Otherwise, the customer is obliged to level the surface before installation.